



VTT-CLEAN

Knobs with solid section

Technopolymer, easy cleaning



ELESA Original design

Main specifications

Material

Glass-fibre reinforced polyamide based (PA) technopolymer, white colour similar to RAL 9002, matte finish.

Standard executions

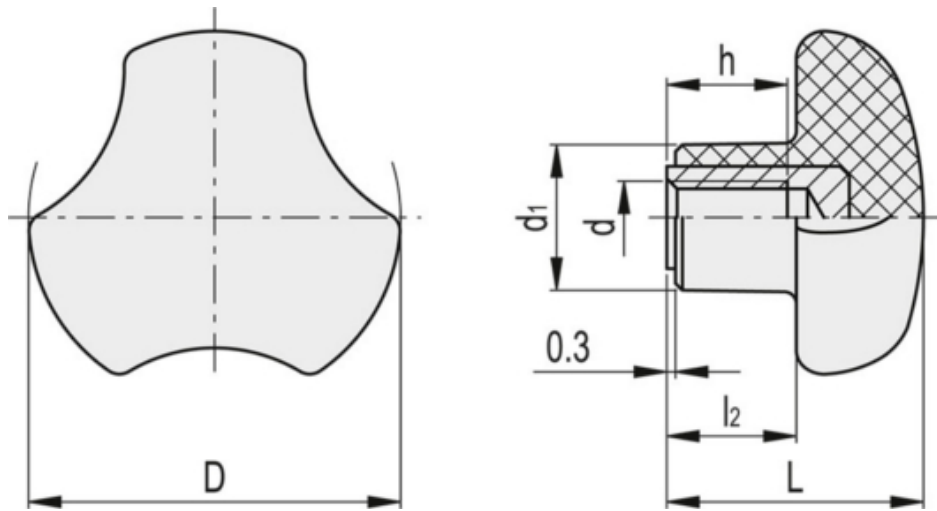
- **VTT-CLEAN:** AISI 304 stainless steel boss, threaded blind hole.
- **VTT-p-CLEAN:** AISI 304 stainless steel threaded stud, chamfered flat end according to UNI 947 : ISO 4753 (see [Technical data](#)).

General information

Features and applications

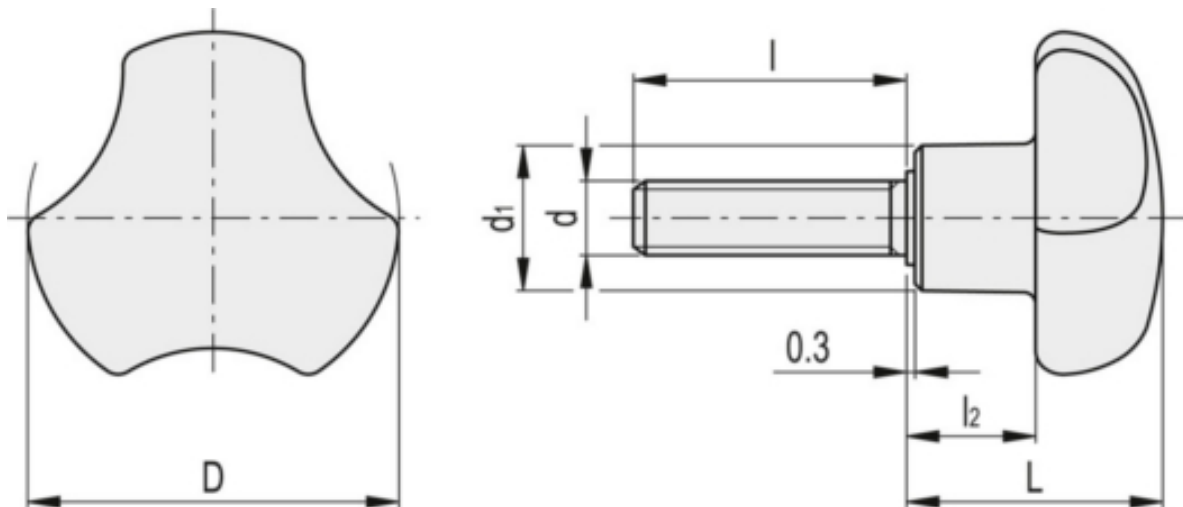
The three-lobe shape with large recesses is particularly ergonomic also for smaller knobs, ensuring an effective grip even with work gloves.

The design without rear cavities, generally suitable for reducing thickness, prevents unhealthy residues from depositing, ensuring easy cleaning. Particularly suitable for applications on machines and equipment whose parts must be frequently cleaned by using water jets or steam.



VTT-CLEAN

Code	Description	D	d _{6H}	L	d ₁	l ₂	h	Weight
151752	VTT.25-SST-M5 CLEAN	25	M5	20	12	10	10	9
151762	VTT.32-SST-M6 CLEAN	32	M6	23	14	11.5	10	19
151772	VTT.40-SST-M8 CLEAN	40	M8	27	16	13.5	13	24
151782	VTT.50-SST-M10 CLEAN	50	M10	30	19	15	17	37



VTT-p-CLEAN

Code	Description	D	d _{6g}	L	d ₁	L	l ₂	Weight
151754	VTT.25-SST-p-M5x10 CLEAN	25	M5	20	12	10	10	8
151755	VTT.25-SST-p-M5x16 CLEAN	25	M5	20	12	16	10	9
151764	VTT.32-SST-p-M6x16 CLEAN	32	M6	23	14	16	11.5	15
151765	VTT.32-SST-p-M6x20 CLEAN	32	M6	23	14	20	11.5	16
151766	VTT.32-SST-p-M6x30 CLEAN	32	M6	23	14	30	11.5	19
151774	VTT.40-SST-p-M8x20 CLEAN	40	M8	27	16	20	13.5	28
151776	VTT.40-SST-p-M8x30 CLEAN	40	M8	27	16	30	13.5	32
151777	VTT.40-SST-p-M8x40 CLEAN	40	M8	27	16	40	13.5	36
151783	VTT.50-SST-p-M10x20 CLEAN	50	M10	30	19	20	15	47
151785	VTT.50-SST-p-M10x30 CLEAN	50	M10	30	19	30	15	57
151786	VTT.50-SST-p-M10x40 CLEAN	50	M10	30	19	40	15	67